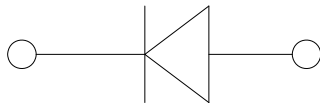
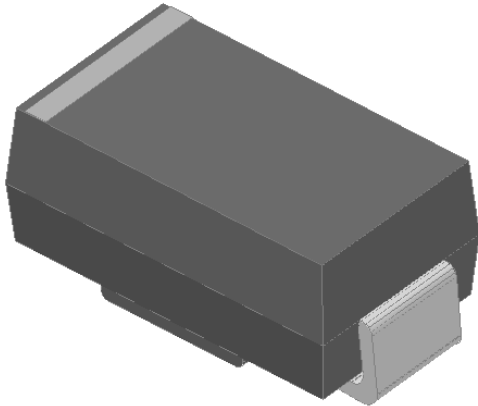


Surface Mount Super Fast Recovery Rectifier



Features

- Low profile package
- Ideal for automated placement
- Glass passivated chip junction
- High forward surge capability
- Super Fast reverse recovery time
- Meets MSL level 1, per J-STD-020, LF maximum peak of 260 °C

Typical Applications

For use in high frequency rectification of power supplies, inverters, converters, and freewheeling diodes for consumer, and telecommunication.

Mechanical Data

- **Package:** DO-214AC(SMA)
Molding compound meets UL 94 V-0 flammability rating, RoHS-compliant, halogen-free
- **Terminals:** Tin plated leads, solderable per J-STD-002 and JESD22-B102
- **Polarity:** Cathode line denotes the cathode end

■ Maximum Ratings (Ta=25°C Unless otherwise specified)

PARAMETER	SYMBOL	UNIT	MURS120	MURS140	MURS160
Device marking code			MURS120	MURS140	MURS160
Maximum Repetitive Peak Reverse Voltage	V_{RRM}	V	200	400	600
Maximum RMS Voltage	V_{RMS}	V	140	280	420
Maximum DC blocking Voltage	V_{DC}	V	200	400	600
Average rectified output current @60Hz sine wave, resistance load, TL (Fig.1)	I_O	A	1.0		
Forward Surge Current (Non-repetitive) @60Hz Half-sine wave, 1 cycle, Tj=25°C	I_{FSM}	A	30		
Forward Surge Current (Non-repetitive) @1ms, square wave, 1 cycle, Tj=25°C			60		
Current squared time @1ms≤t≤8.3ms Tj=25°C	I^2t	A ² s	3.735		
Storage temperature	T_{stg}	°C	-55 ~ +150		
Junction temperature	T_j	°C	-55 ~ +150		

■ Electrical Characteristics (Ta=25°C Unless otherwise specified)

PARAMETER	SYMBOL	UNIT	TEST CONDITIONS	MURS120	MURS140	MURS160
Maximum instantaneous forward voltage	V_F	V	$I_{FM}=1.0A$	0.92	1.25	
Maximum reverse recovery time	T_{RR}	ns	$I_F=0.5A, I_R=1.0A, I_{rr}=0.25A$	25	50	
Maximum DC reverse current at rated DC blocking voltage	I_R	μA	Tj =25°C	5.0		
			Tj =125°C	50		
Typical junction capacitance	C_j	pF	Measured at 1MHz and Applied Reverse Voltage of 4.0 V.D.C	17	15	14



MURS120 THRU MURS160

Dynamic Characteristics

◆ MURS120

PARAMETER	SYMBOL	UNIT	TEST CONDITIONS		Min	Typ	Max
Reverse Recovery Time	T_{RR}	ns	Tj=25°C	$I_F=1A, di/dt=-50A/us$ $V_{RM}=30V$	-	28	-
			Tj=25°C	$I_F=1A$ $di/dt=-200A/us$ $V_{RM}=100V$	-	19	-
			Tj=125°C		-	25	-
Peak recovery current	I_{RRM}	A	Tj=25°C	$I_F=1A$ $di/dt=-200A/us$ $V_{RM}=100V$	-	2.6	-
			Tj=125°C		-	4.0	-
Reverse recovery charge	Qrr	nC	Tj=25°C	$I_F=1A$ $di/dt=-200A/us$ $V_{RM}=100V$	-	24.6	-
			Tj=125°C		-	52.3	-
Non-repetitive avalanche energy	EAS	mJ	Tj=25°C	$I_R=1.4 A, L=15 mH$	14.7	-	-

◆ MURS140

PARAMETER	SYMBOL	UNIT	TEST CONDITIONS		Min	Typ	Max
Reverse Recovery Time	T_{RR}	ns	Tj=25°C	$I_F=1A, di/dt=-50A/us$ $V_{RM}=30V$	-	26	-
			Tj=25°C	$I_F=1A$ $di/dt=-200A/us$ $V_{RM}=200V$	-	22	-
			Tj=125°C		-	31	-
Peak recovery current	I_{RRM}	A	Tj=25°C	$I_F=1A$ $di/dt=-200A/us$ $V_{RM}=200V$	-	1.9	-
			Tj=125°C		-	3.5	-
Reverse recovery charge	Qrr	nC	Tj=25°C	$I_F=1A$ $di/dt=-200A/us$ $V_{RM}=200V$	-	21.1	-
			Tj=125°C		-	54.9	-
Non-repetitive avalanche energy	EAS	mJ	Tj=25°C	$I_R=0.4A, L=15 mH$	1.2	-	-

◆ MURS160

PARAMETER	SYMBOL	UNIT	TEST CONDITIONS		Min	Typ	Max
Reverse Recovery Time	T_{RR}	ns	Tj=25°C	$I_F=1A, di/dt=-50A/us$ $V_{RM}=30V$	-	49	-
			Tj=25°C	$I_F=1A$ $di/dt=-200A/us$ $V_{RM}=400V$	-	38	-
			Tj=125°C		-	59	-
Peak recovery current	I_{RRM}	A	Tj=25°C	$I_F=1A$ $di/dt=-200A/us$ $V_{RM}=400V$	-	3.5	-
			Tj=125°C		-	5.5	-
Reverse recovery charge	Qrr	nC	Tj=25°C	$I_F=1A$ $di/dt=-200A/us$ $V_{RM}=400V$	-	67.4	-
			Tj=125°C		-	160.5	-
Non-repetitive avalanche energy	EAS	mJ	Tj=25°C	$I_R=0.5A, L=15 mH$	1.9	-	-

Thermal Characteristics (Ta=25°C Unless otherwise specified)

PARAMETER	SYMBOL	UNIT	MURS120	MURS140	MURS160
Typical Thermal resistance	RθJ-A ⁽¹⁾	°C/W	70		
	RθJ-L ⁽¹⁾		22		
	RθJ-C ⁽¹⁾		20		

Note:
 (1) Thermal resistance from junction to ambient and from junction to lead mounted on P.C.B. with 0.2" x 0.2" (5.0 mm x 5.0 mm) copper pad areas



MURS120 THRU MURS160

■ Characteristics (Typical)

FIG.1: I_o -TL Curve

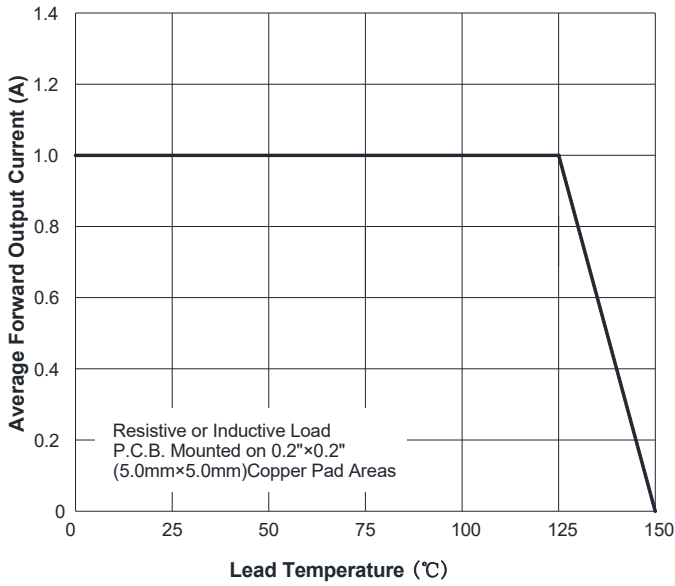


FIG.2: Forward Surge Current Capacity

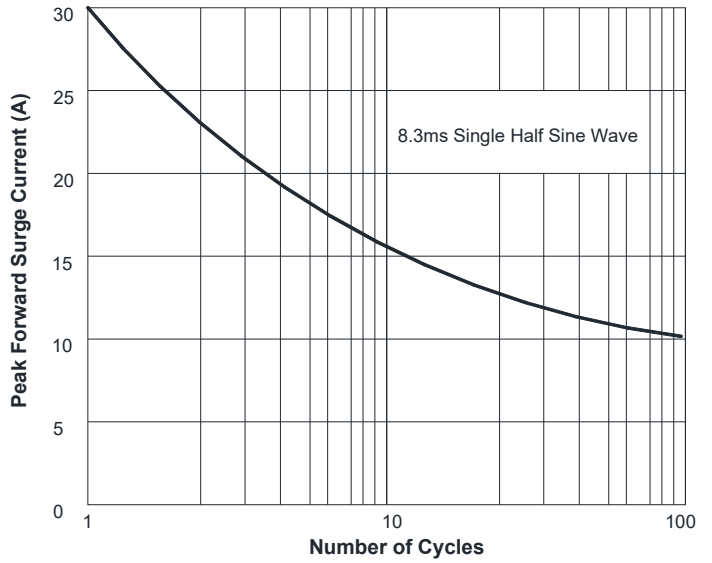


FIG.3: Typical Forward Voltage

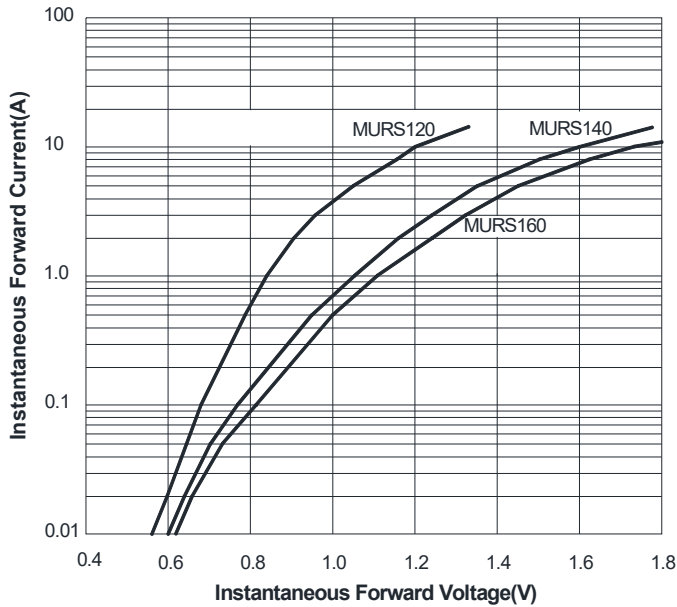


FIG.4: Typical Reverse Characteristics

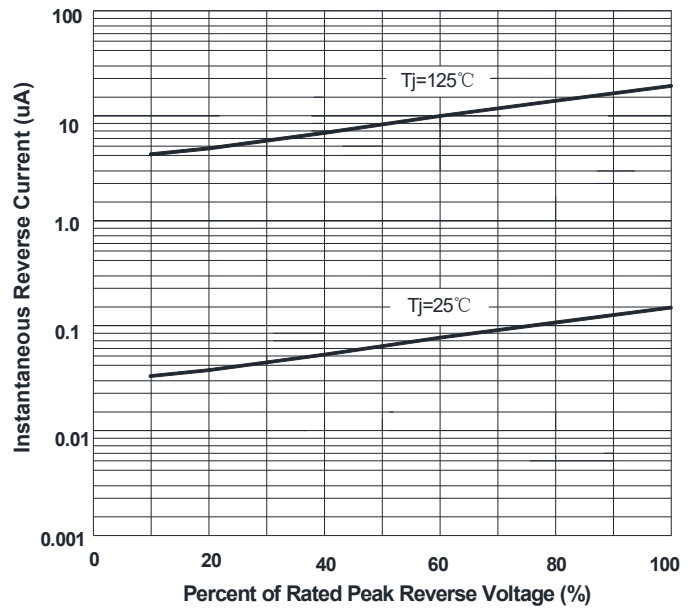
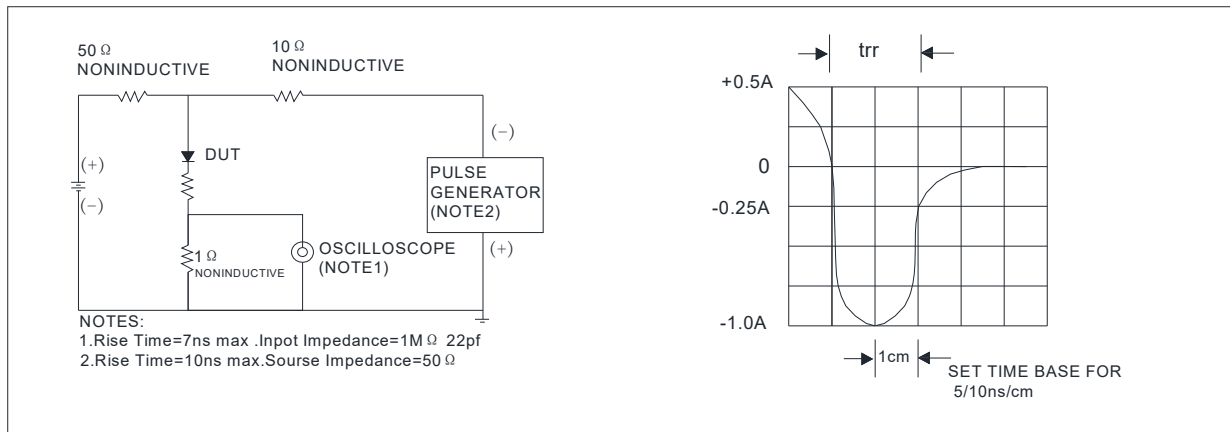


FIG.5: Diagram of circuit and Testing wave form of reverse recovery time



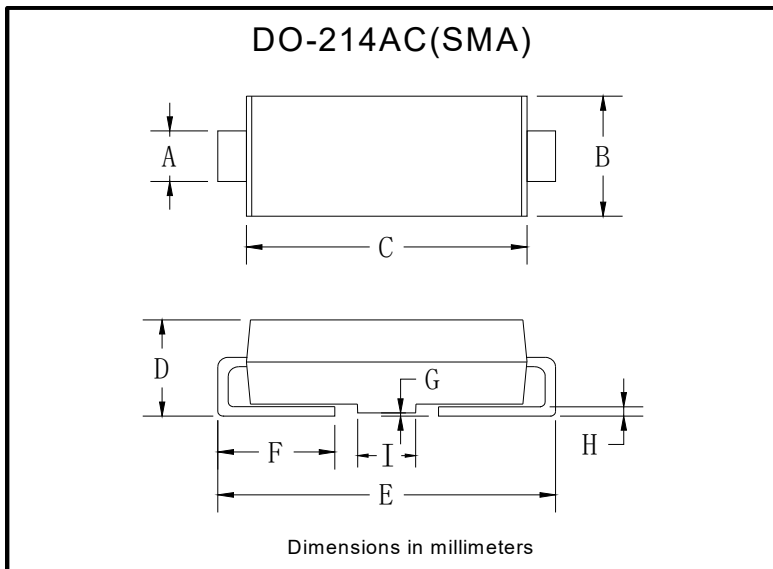


MURS120 THRU MURS160

Ordering Information (Example)

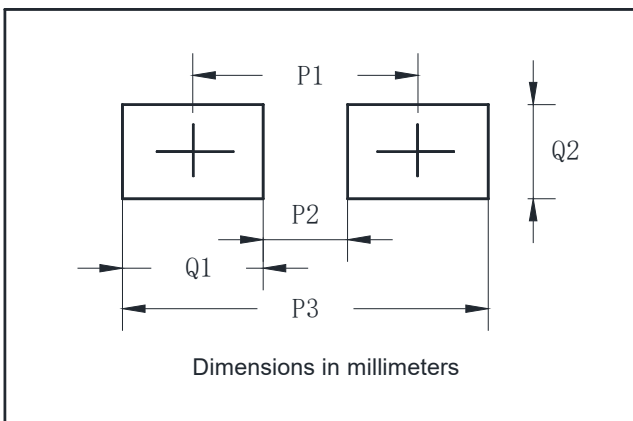
PREFERRED P/N	PACKAGE CODE	UNIT WEIGHT(g)	MINIMUM PACKAGE(pcs)	INNER BOX QUANTITY(pcs)	OUTER CARTON QUANTITY(pcs)	DELIVERY MODE
MURS120-MURS160	F1	Approximate 0.059	5000	/	80000	13" reel
MURS120-MURS160	F2	Approximate 0.059	7500	/	120000	13" reel
MURS120-MURS160	F3	Approximate 0.059	7500	/	60000	13" reel
MURS120-MURS160	F4	Approximate 0.059	1800	14400	57600	7" reel
MURS120-MURS160	F5	Approximate 0.059	2000	16000	64000	7" reel
MURS120-MURS160	F6	Approximate 0.059	5000	/	100000	13" reel

Outline Dimensions



DO-214AC(SMA)		
Dim	Min	Max
A	1.25	1.58
B	2.40	2.83
C	4.00	4.75
D	1.90	2.30
E	4.93	5.28
F	0.76	1.41
G	0.05	0.20
H	0.15	0.31
I	1.70	2.10

Suggested Pad Layout



DO-214AC(SMA)	
Dim	Millimeters
P1	4.00
P2	1.50
P3	6.50
Q1	2.50
Q2	1.70



MURS120 THRU MURS160

Disclaimer

The information presented in this document is for reference only. Yangzhou Yangjie Electronic Technology Co., Ltd. reserves the right to make changes without notice for the specification of the products displayed herein to improve reliability, function or design or otherwise.

The product listed herein is designed to be used with ordinary electronic equipment or devices, and not designed to be used with equipment or devices which require high level of reliability and the malfunction of which would directly endanger human life (such as medical instruments, transportation equipment, aerospace machinery, nuclear-reactor controllers, fuel controllers and other safety devices), Yangjie or anyone on its behalf, assumes no responsibility or liability for any damages resulting from such improper use of sale.

This publication supersedes & replaces all information previously supplied. For additional information, please visit our website [http:// www.21yangjie.com](http://www.21yangjie.com) , or consult your nearest Yangjie's sales office for further assistance.